



The only speciality in the world

Create your sketched ideas and convey it from various angles. Allows you to preview the feature and set the direction of impovement.

Multi Link Suspension



20" 10-Double Spoke



Electric Power Steering



CRIMSON RED



The only speciality in the world

Create your sketched ideas and convey it from various angles. Allows you to preview the feature and set the direction of impovement.

V8 Engine



GOLD/YELLOW



See Beyond, LG Transparent OLED Signage

55EW5F-A

* All images used are for illustrative purposes only.

A New Level of See-through View

Imagination becomes reality

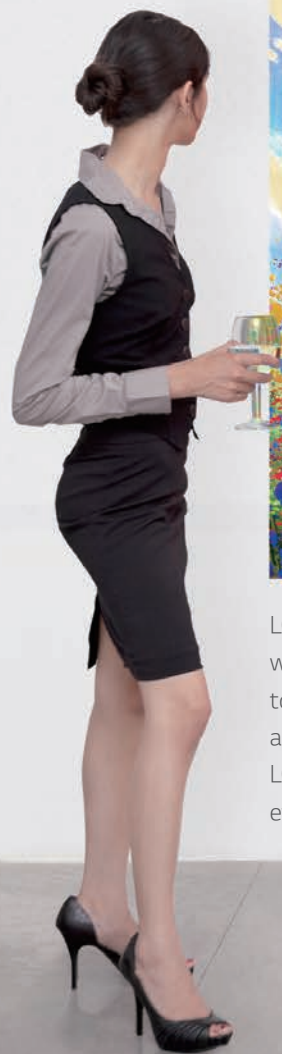
LG Transparent OLED signage illuminates spaces that once were hidden away behind the display, completely harmonizing with its surroundings.

Boasting vivid and clear colors with high transparency, this display provides valuable information about as well as visual enhancements to objects placed behind it, giving viewers an impressive “wow” factor.



FULL OF LIFE

Unrivaled Picture Quality



LG's OLED technology, featuring self-lighting pixels, maintains accurate and vivid colors even when the display becomes transparent. It brings content to life, making it difficult for people to separate content from the real objects placed behind the screen. Only when viewed from a side angle is the content readily distinguishable from the actual object. Also noteworthy, LG Transparent OLED signage delivers awe-inspiring picture quality in all parts of the screen, even from wide viewing angles.

SPACE HARMONY

High Transparency

Thanks to its high transparency (38%), much higher than conventional LCD transparent displays, LG Transparent OLED signage blends into its surroundings seamlessly and naturally. The display's see-through view turns places where it is installed into open and interactive spaces.

King Suite

As soon as you enter the room, open spaces, high floors and a large window of natural lighting make the room more spacious. Sufficient storage space is also provided for travelers, and is located on a high floor, giving them the freedom to enjoy the spectacular night view of the city.

ROOM SIZE 128 sq. meters (50 sq. ft.)	OCCUPANCY 2 Adults and 2 Children
BED OPTIONS One King bed	BATHROOM One full bathroom (plus 2 separate rooms)
VIEW City	SERVICES 24-hour concierge & guest services Room service (fees apply)

Food and Beverage Promotion

The Lounge features a unique menu and a menu designed by a food consultant from the world-class Michelin restaurant.



SPACIAL HARMONY

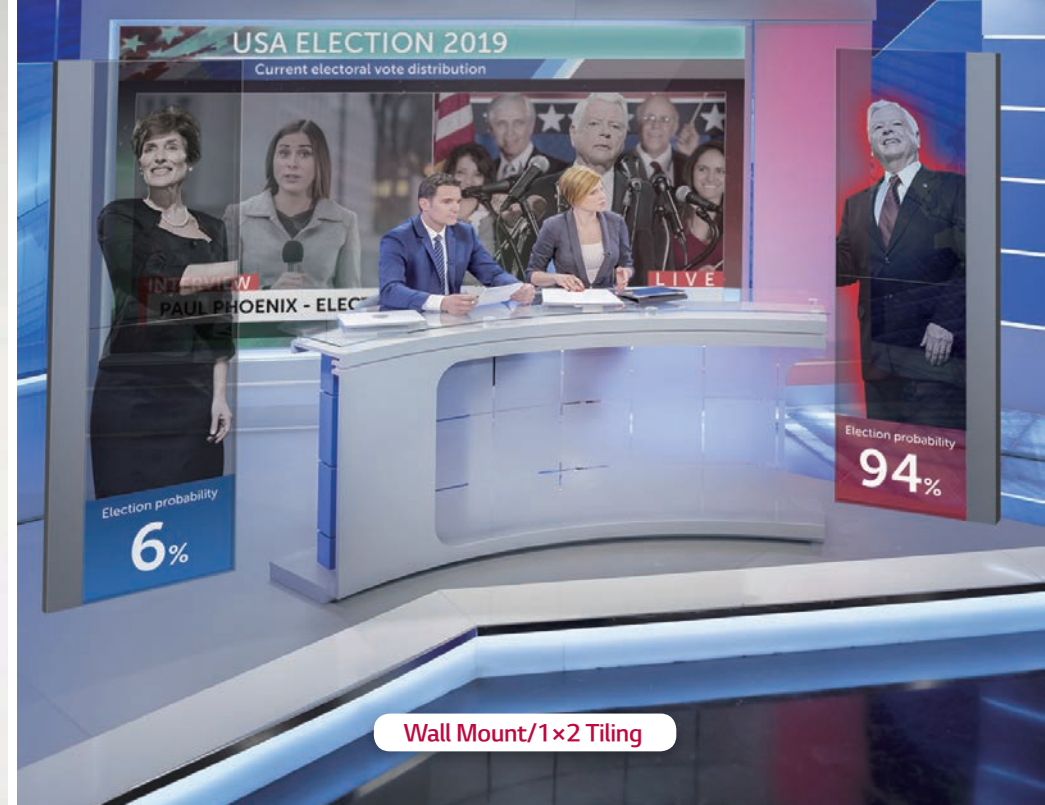
Customizable and Expandable Design



LG Transparent OLED signage is designed as a semi-assembled display, meaning you can install it in various ways to fit into existing structures and spaces. The single stand-alone* type is available, as well as ceiling and wall-mount types*. Displays can be also tiled* together to make a immersive screen, enabling installation on large show-windows. There is no limit to the applications of transparent OLED signage, and it can complement and enhance any venue in which it is installed.

* Installation accessories are not supplied by LG.

Ceiling/Single



Wall Mount/1x2 Tiling



2x2 Tiling

SEE THROUGH

Effective Information Delivery

When people observe an object, having supplemental information can help provide a richer understanding. In this case, LG Transparent OLED signage is the optimal solution. While clearly showing objects behind the screen, it overlays information right over them so that viewers can easily see both the object and the relevant information without having to change their view.



VISUAL FEAST

AR Effects in the Dark

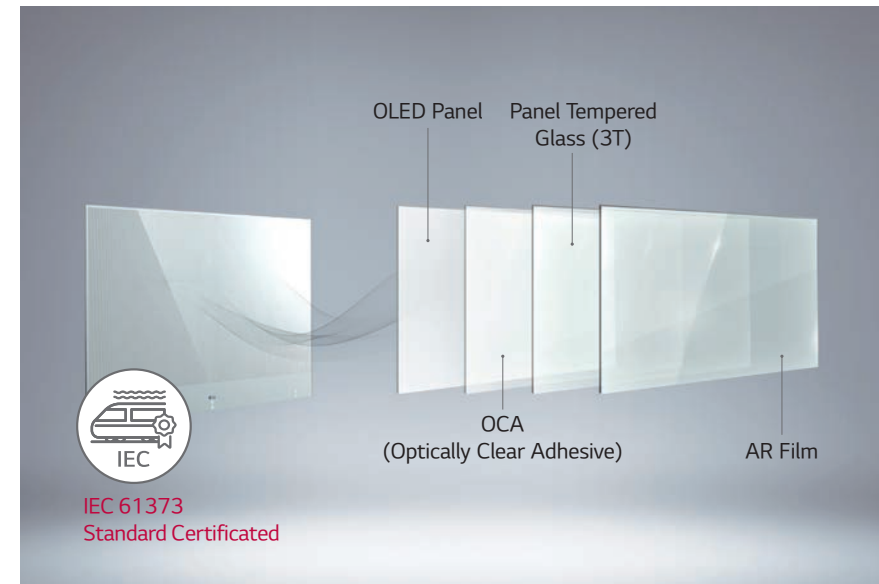
Using LG transparent OLED signage, you can surprise viewers with AR effects in the dark. The content displayed seems life-like, adding another “wow” factor to the viewing experience.



PRODUCT DURABILITY

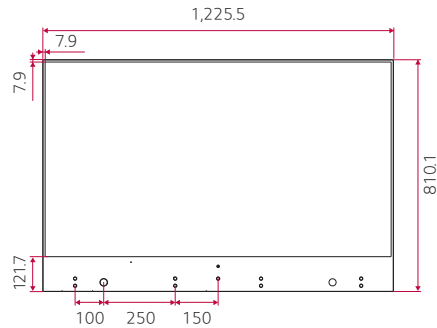
Robust Design for Safety

The tempered front glass protects the screen from external impact, and its certified safety design means it is reliable enough to endure shock and vibration caused by the surrounding environment, such as moving trains.

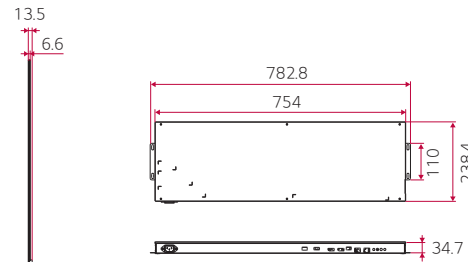


Dimension (unit: mm)

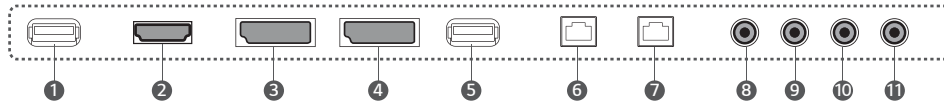
Head



Signage Box



Connectivity



- ① USB 2.0
- ② HDMI IN
- ③ DP IN
- ④ DP OUT
- ⑤ USB 2.0
- ⑥ LAN IN
- ⑦ LAN OUT
- ⑧ IR IN
- ⑨ RS232C IN
- ⑩ RS232C OUT
- ⑪ AUDIO OUT



Specifications

55EW5F-A

	Screen Size	55"
	Panel Technology	OLED
	Aspect Ratio	16 : 9
	Native Resolution	1,920 x 1,080 (FHD)
	Brightness (Typ.)	400/150 cd/m ² (Average Picture Level 25%/100%, Panel)
	Transparency (Typ.)	38% (Panel)
PANEL	Viewing Angle (H x V)	178 x 178
	Response Time	1 ms (G to G), 8 ms (MPRT)
	Surface Treatment (Haze)	Hard Coating (2H), Anti-reflection Treatment of the Front Polarizer (Reflectance Typ. 14%)
	Life Time (Typ.)	30,000 Hrs
	Operation Hours	18 Hrs / 7 days *Moving Video Only
	Orientation	Landscape & Portrait
		Input
CONNECTIVITY	Output	DP, Audio
	External Control	RS232C In/out, RJ45 (LAN) In/out, IR In
	Bezel Color	Silver
	Bezel Width	7.9 / 7.9 / 7.9 / 121.7 mm (T/B/L/R)
MECHANICAL SPECIFICATION	Monitor Dimension (W x H x D)	(Head) 1,225.53 x 810.1 x 6.6 mm (Signage Box) 782.8 x 238.4 x 34.7 mm
	Weight	(Panel and Glass Set) 1.23 kg (Signage Box) 3.2 kg
	Carton Dimensions (W x H x D)	1,345 x 920 x 207 mm
	Packed Weight	22.4 kg
KEY FEATURE	Internal Memory (64GB), Temperature Sensor, Embedded CMS, Fail Over, Content Sync, OSD Rotation, Lock Mode, Content Rotation, Gapless Playback, Tile Mode Setting, Setting Data Cloning, Firmware Update by Network, SNMP, ISM Mode, \Control Manager, Crestron Connected [®] 1), DPM, PM Mode, Wake on LAN, SI Server Setting, webRTC	
ENVIRONMENT CONDITIONS	Operation Temperature	0°C to 40°C
	Operation Humidity	10% to 80%
POWER	Power Supply	100-240V~, 50/60Hz
	Power Type	Built-In Power
	Power Consumption	Typ. 309 W *8 color bar Max. 318 W *8 color bar
CERTIFICATION	Safety	IEC 60950-1 / EN 60950-1 / UL 60950-1
	EMC	FCC Class "A" / CE / KC
	ErP / Energy Star	Yes / No
MEDIA PLAYER COMPATIBILITY	OPS Type Compatible	No
	External Media Player Attachable	Yes
SOFTWARE COMPATIBILITY	Content Management Software	SuperSign CMS
	Control and Monitoring Software	SuperSign Control / Control+
ACCESSORIES	Basic	Remote Controller, Power Cord, QSG, IR Receiver, Regulation Book, Phone to RS232C Gender, RS232C Cable (4p-4p), FFC Cables (for Connection between Panel and Signage Box), DP Cable, LAN Cable, LC (VLC Cable), Tapes, Screws, Shield Cover Assy, Rubber Dampers

1) Network Based Control



Download
LG C-Display+
Mobile App

Google Play Store

- www.lg.com/b2b
- www.youtube.com/c/LGCommercialDisplay
- www.facebook.com/LGInformationDisplay
- www.linkedin.com/company/LGInformationDisplay

LG may make changes to specifications and product descriptions without notice.
Copyright © 2019 LG Electronics Inc. All rights reserved. "LG Life's Good" is a registered trademark of LG Corp.
The names of products and brands mentioned here may be the trademarks of their respective owners.

